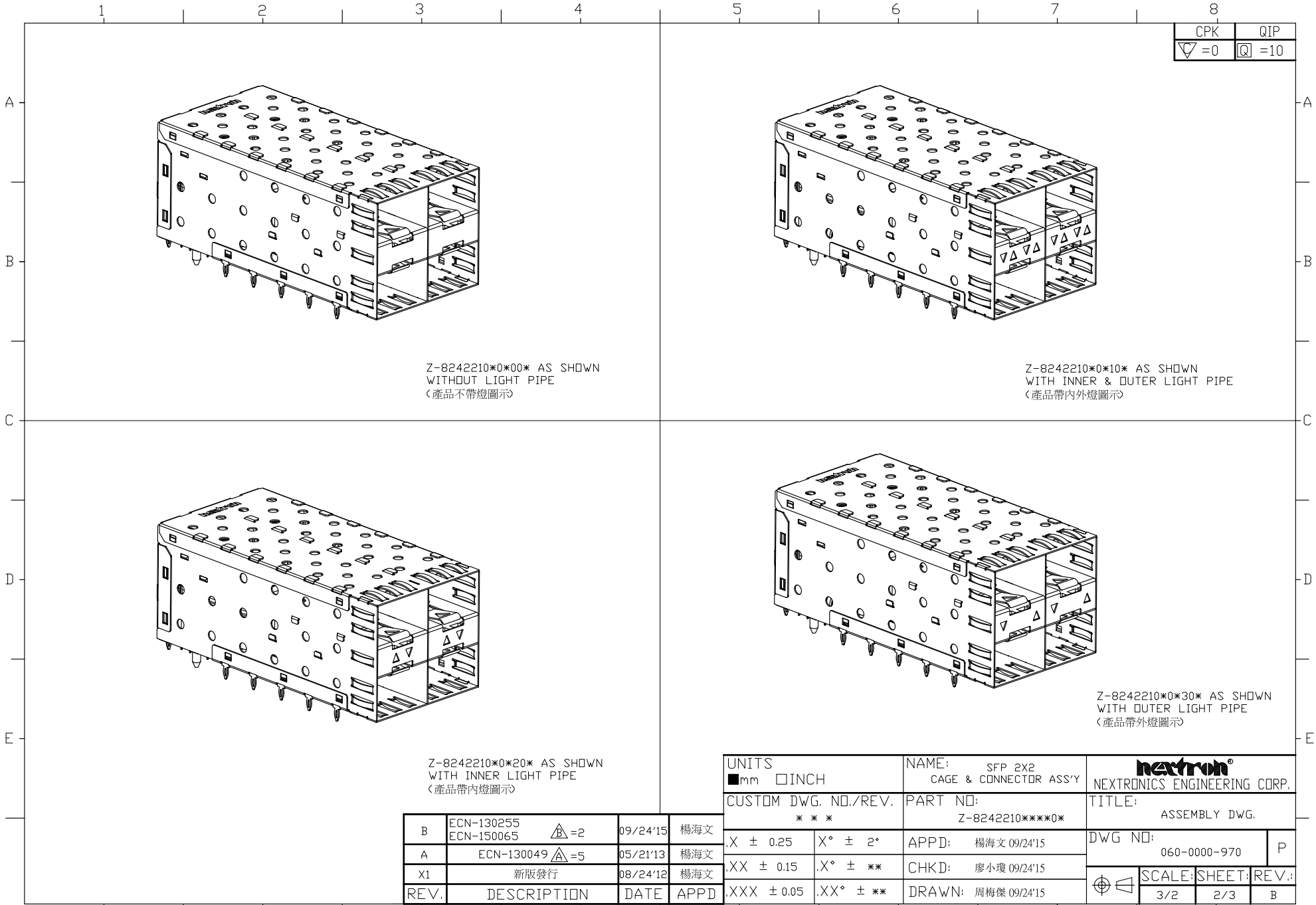


|       |        |
|-------|--------|
| CPK   | QIP    |
| ▽ = 0 | □ = 10 |

OUTER LIGHT PIPE (外燈)  
INNER LIGHT PIPE (內燈)

|      |                          |       |          |      |
|------|--------------------------|-------|----------|------|
| B    | ECN-130255<br>ECN-150065 | △ = 2 | 09/24'15 | 楊海文  |
| A    | ECN-130049               | △ = 5 | 05/21'13 | 楊海文  |
| X1   | 新版發行                     |       | 08/24'12 | 楊海文  |
| REV. | DESCRIPTION              |       | DATE     | APPD |

|                               |           |   |  |   |  |
|-------------------------------|-----------|---|--|---|--|
| UNITS<br>■ mm □ INCH          |           | NAME: SFP 2X2<br>CAGE & CONNECTOR ASS'Y |  | nexttron®<br>NEXTRONICS ENGINEERING CORP. |  |
| CUSTOM DWG. NO./REV.<br>* * * |           | PART NO:<br>Z-8242210****0*             |  | TITLE:<br>ASSEMBLY DWG.                   |  |
| .X ± 0.25                     | .X° ± 2°  | APPD: 楊海文 09/24'15                      |  | DWG NO:<br>060-0000-970                   |  |
| .XX ± 0.15                    | .X° ± **  | CHKD: 廖小瓊 09/24'15                      |  | P   |  |
| .XXX ± 0.05                   | .XX° ± ** | DRAWN: 周梅傑 09/24'15                     |  | SCALE: SHEET: REV.:<br>3/2 1/3 B          |  |



|     |     |
|-----|-----|
| CPK | QIP |
| =0  | =10 |

Z-8242210\*0\*00\* AS SHOWN  
WITHOUT LIGHT PIPE  
(產品不帶燈圖示)

Z-8242210\*0\*10\* AS SHOWN  
WITH INNER & OUTER LIGHT PIPE  
(產品帶內外燈圖示)

Z-8242210\*0\*20\* AS SHOWN  
WITH INNER LIGHT PIPE  
(產品帶內燈圖示)

Z-8242210\*0\*30\* AS SHOWN  
WITH OUTER LIGHT PIPE  
(產品帶外燈圖示)

|      |                          |             |          |     |
|------|--------------------------|-------------|----------|-----|
| B    | ECN-130255<br>ECN-150065 | $\Delta$ =2 | 09/24'15 | 楊海文 |
| A    | ECN-130049               | $\Delta$ =5 | 05/21'13 | 楊海文 |
| X1   | 新版發行                     |             | 08/24'12 | 楊海文 |
| REV. | DESCRIPTION              | DATE        | APPD     |     |

|   |           |   |   |            |
|---|-----------|---|---|------------|
| UNITS<br><input checked="" type="checkbox"/> mm <input type="checkbox"/> INCH |           | NAME: SFP 2X2<br>CAGE & CONNECTOR ASS'Y | <b>nexttron</b><br>NEXTRONICS ENGINEERING CORP. |            |
| CUSTOM DWG. NO./REV.<br>***   |           | PART NO:<br>Z-8242210****0*             | TITLE:<br>ASSEMBLY DWG.                         |            |
| .X ± 0.25   | .X° ± 2°  | APPD: 楊海文 09/24'15                      | DWG NO:<br>060-0000-970                         | P          |
| .XX ± 0.15  | .X° ± **  | CHKD: 廖小瓊 09/24'15                      | SCALE: 3/2                                      | SHEET: 2/3 |
| .XXX ± 0.05   | .XX° ± ** | DRAWN: 周梅傑 09/24'15                     | REV.:   | B          |

|     |     |
|-----|-----|
| CPK | QIP |
| =0  | =10 |

備注:  
 1. 材質說明:  
 TOP,BOTTOM,WALL CAGE: 白銅牌號C7701R-H,硬度要求210HV MIN.  
 MIDDLE CAGE: N10,1/2H硬度.  
 LIGHT PIPE: PC, 透明.  
 INSERT HOUSING: PBT-30%GF,黑色,防火等級UL94 V-0.  
 BODY HOUSING: LCP E130,黑色,防火等級UL94 V-0.  
 INSERTMOLDING: LCP E130,黑色,防火等級UL94 V-0.  
 CONTACT: C5210,EH硬度.  
 KICK OUT SPRING: SUS 301, 1/2H硬度.

2. 電鍍說明:  
 CAGE: 預鍍鎳50u-150u.  
 CONTACT: 依料號意義說明,功能區鍍金最少30u"或15u";  
 壓接區鍍鎳60-150u";  
 端子整個區域打鍍底50-100u".

3. 所有腳位正位度需用正位度治具檢驗.  
 4. 電氣性能:  
 接觸電阻: 70mΩ Max  
 絕緣阻抗: 1000MΩ Min  
 電壓: 120V AC  
 耐電壓: 300V AC  
 電流: 0.5A Max  
 工作溫度: -55°C to 85°C

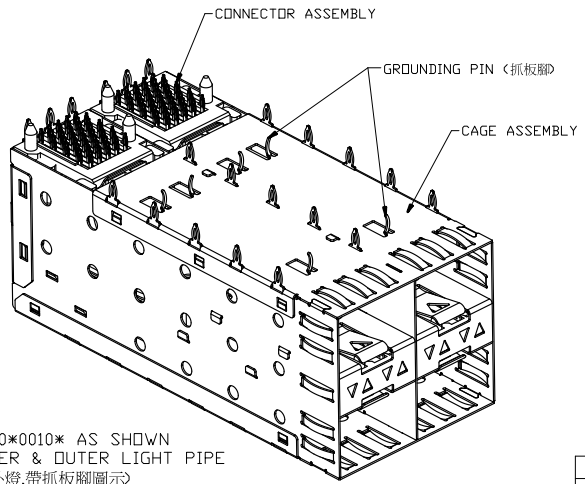
5. 機械性能:  
 光模組插入力: 40N Max  
 光模組拔出力: 11.5N Max  
 插拔耐久: 100次

6. 點尾結構需依圖示點焊,焊點不可燒焦,虛焊,點焊後上下左右不能向外漲開.

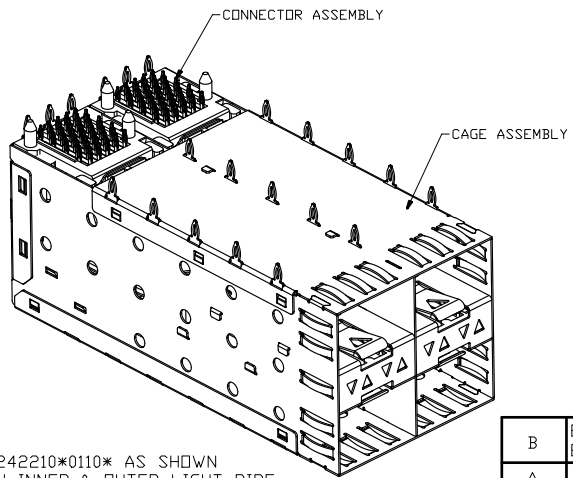
Z - 8 2 4 2 2 X X X 0 X X 0 X

Product Type: \_\_\_\_\_  
 1=Press-fit  
 Body Housing Material: \_\_\_\_\_  
 0=LCP E130i  
 Contact Material & Plating: \_\_\_\_\_  
 0=C5210, Plating Au 30u" on Contact Area  
 1=C5210, Plating Au 15u" on Contact Area

Product Type: \_\_\_\_\_  
 0=with Nextron Logo  
 1=without Logo  
 Light Pipe Type: \_\_\_\_\_  
 0=without Light Pipe  
 1=with Inner & Outer Light Pipes  
 2=with Inner Light Pipe  
 3=with Outer Light Pipe  
 Grounding Pin Type: \_\_\_\_\_  
 0=with Grounding Pins (帶抓板腳)  
 1=without Grounding Pin (不帶抓板腳)



Z-8242210\*0010\* AS SHOWN WITH INNER & OUTER LIGHT PIPE (產品帶內外燈,帶抓板腳圖示)



Z-8242210\*0110\* AS SHOWN WITH INNER & OUTER LIGHT PIPE (產品帶內外燈,不帶抓板腳圖示)

|    |                 |                    |  |                 |
|----|-----------------|--------------------|--|-----------------|
| 2  | Z-823100*00000* | CONNECTOR ASSEMBLY | SFP 2X2 CAGE & CONNECTOR ASSY, WITH OUTER LIGHT PIPE (帶外燈,不帶抓板腳)           | Z-8242210*0130* |
| 1  | Z-824221AA0130* | CAGE ASSEMBLY      |  |                 |
| 2  | Z-823100*00000* | CONNECTOR ASSEMBLY | SFP 2X2 CAGE & CONNECTOR ASSY, WITH INNER LIGHT PIPE (帶內燈,不帶抓板腳)           | Z-8242210*0120* |
| 1  | Z-824221AA0120* | CAGE ASSEMBLY      |  |                 |
| 2  | Z-823100*00000* | CONNECTOR ASSEMBLY | SFP 2X2 CAGE & CONNECTOR ASSY, WITH INNER & OUTER LIGHT PIPES (帶內外燈,不帶抓板腳) | Z-8242210*0110* |
| 1  | Z-824221AA0110* | CAGE ASSEMBLY      |  |                 |
| 2  | Z-823100*00000* | CONNECTOR ASSEMBLY | SFP 2X2 CAGE & CONNECTOR ASSY, WITHOUT LIGHT PIPE (不帶燈,不帶抓板腳)              | Z-8242210*0100* |
| 1  | Z-824221AA0100* | CAGE ASSEMBLY      |  |                 |
| 2  | Z-823100*00000* | CONNECTOR ASSEMBLY | SFP 2X2 CAGE & CONNECTOR ASSY, WITH OUTER LIGHT PIPE (帶外燈,帶抓板腳)            | Z-8242210*0030* |
| 1  | Z-824221AA0030* | CAGE ASSEMBLY      |  |                 |
| 2  | Z-823100*00000* | CONNECTOR ASSEMBLY | SFP 2X2 CAGE & CONNECTOR ASSY, WITH INNER LIGHT PIPE (帶內燈,帶抓板腳)            | Z-8242210*0020* |
| 1  | Z-824221AA0020* | CAGE ASSEMBLY      |  |                 |
| 2  | Z-823100*00000* | CONNECTOR ASSEMBLY | SFP 2X2 CAGE & CONNECTOR ASSY, WITH INNER & OUTER LIGHT PIPES (帶內外燈,帶抓板腳)  | Z-8242210*0010* |
| 1  | Z-824221AA0010* | CAGE ASSEMBLY      |  |                 |
| 2  | Z-823100*00000* | CONNECTOR ASSEMBLY | SFP 2X2 CAGE & CONNECTOR ASSY, WITHOUT LIGHT PIPE (不帶燈,帶抓板腳)               | Z-8242210*0000* |
| 1  | Z-824221AA0000* | CAGE ASSEMBLY      |  |                 |
| 數量 | 半成品料號           |                    | 成品描述   | 成品料號            |

|   |          |                                      |                              |            |
|---|----------|--------------------------------------|------------------------------|------------|
| UNITS<br><input checked="" type="checkbox"/> mm <input type="checkbox"/> INCH |          | NAME: SFP 2X2 CAGE & CONNECTOR ASS'Y | NEXTRONICS ENGINEERING CORP. |            |
| CUSTOM DWG. NO./REV.<br>***   |          | PART NO: Z-8242210****0*             | TITLE: ASSEMBLY DWG.         |            |
| X ± 0.25  | X° ± 2°  | APPD: 楊海文 09/24/15                   | DWG NO: 060-0000-970         | P          |
| XX ± 0.15   | X° ± **  | CHKD: 廖小瓊 09/24/15                   | SCALE: 3/2                   | SHEET: 3/3 |
| XXX ± 0.05  | XX° ± ** | DRAWN: 周梅傑 09/24/15                  | REV: B                       |            |

|      |                          |     |          |      |
|------|--------------------------|-----|----------|------|
| B    | ECN-130255<br>ECN-150065 | △=2 | 09/24/15 | 楊海文  |
| A    | ECN-130049               | △=5 | 05/21/13 | 楊海文  |
| X1   | 新版發行                     |     | 08/24/12 | 楊海文  |
| REV. | DESCRIPTION              |     | DATE     | APPD |