

Table 1: Label Text		
Label ID	Label Text	P/N
P2	P23-CPU	HS2019081303
P4	600141416	HS2019081303
P6	P18-CPU	HS2019081302

REVISION	INITIALS	REASON	DATE
1	LGH	INITIAL DESIGN	5/28/19
2	LGH	WIRE TABLE	6/27/19
3	LGH	P3 TO P4-TLM	7/9/19
4	LGH	P1 CONNECTOR P/N	7/18/19
5	LGH	BOM AND LABEL TABLE	2/20/20
6	LGH	WIRE TABLE, DETAIL A	2/26/20
7	LGH	UPDATE CABLE LENGTHS FOR P2, P3, & P4.	5/7/20
8	LGH	UPDATE CUSTOMER P/N & BOM	6/5/20
9	LGH	CANCEL THE HEAT-SHRINKABLE SLEEVE AND MODIFY THE WIRING DIAGRAM	7/23/20
10	LGH	SHIPPING DETAILS	8/14/20
11	LGH	UPDATE PACKAGING DETAILS	8/20/20
12	LGH	PACKAGIN DETAILS & BOM ITEM#3	9/04/20

A

B

C

D

E

F

A

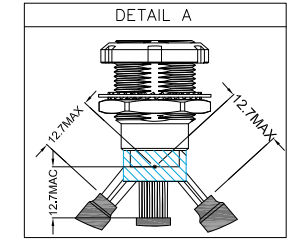
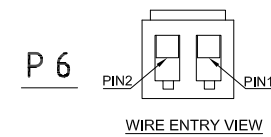
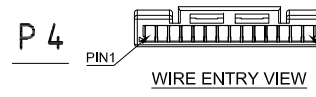
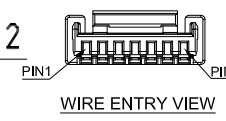
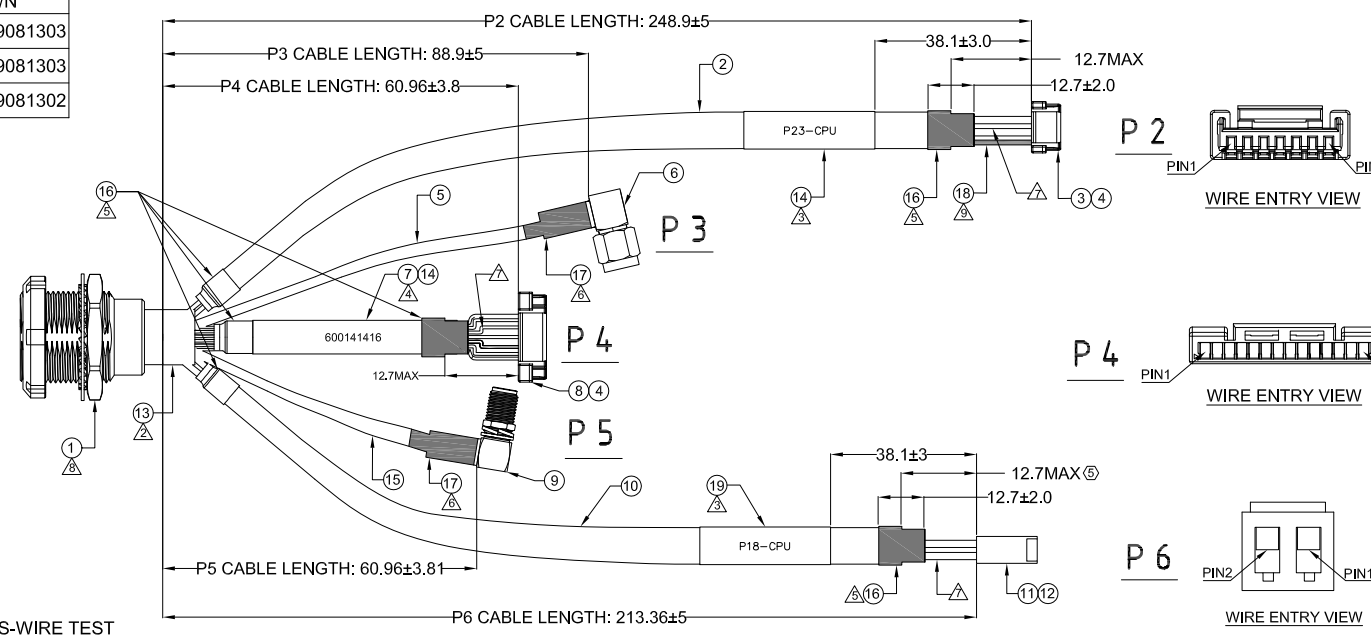
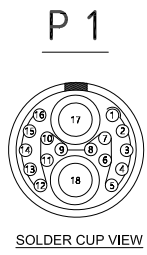
B

C

D

E

F



ELECTRICAL PROPERTIES:

- 100% OPEN, SHORT & MIS-WIRE TEST
- CONTINUITY TEST: PIN TO PIN MAX RESISTANCE 2 OHMS
- DIELECTRIC WITHSTAND VOLTAGE: PIN TO PIN ISOLATION ON ALL CONNECTOR PINS TO BE 1 mA MAX 1000 VDC FOR 1 SECOND MIN.
- INSULATION RESISTANCE: 10 SECOND MAX DWELL RESISTANCE MUST BE GREATER THAN 100M OHMS.
- CONTINUITY TEST FOR INNER CONDUCTOR TO INNER SHELL AND OUTER CONDUCTOR TO OUTER SHELL FOR COAX CABLES.
- 100% S PARAMETER TEST.

NOTES:

- SOLDER WITH Sn96.5/Ag03/Cu.5 SOLDER (LEAD FREE).
- APPLY 3M (ITEM#13) TO POT TERMINATION AREA ON P1 SIDE.
- APPLY CABLE LABEL (ITEM#14/19) WITH TEXT ACCORDING TO LABEL TABLE, AT DIMENSIONS GIVEN ABOVE.
- APPLY CABLE LABEL (ITEM#14/19) WITH TEXT ACCORDING TO LABEL TABLE. POSITION LABEL TO ENSURE THAT APPROXIMATELY 0.25" WILL COVER THE TRANSITIONING FROM CABLE JACKET TO CONDUCTORS, LEAVING NO EXPOSED SHIELDING.
- APPLY HEATSHRINK (ITEM#16) OVER TRANSITIONING FROM CABLE JACKET TO CONDUCTORS. POSITION TO ENSURE APPROXIMATELY 0.25" COVERS THE CABLE JACKET AND 0.25" COVERS THE CONDUCTORS.
- APPLY HEATSHRINK (ITEM#17) OVER PRESSURE TUBE OF ITEM #6&9 AND TRANSITION ON TO THE CABLE JACKET AT APPROXIMATELY 0.25".
- MINIMIZE UNTWISTING OF THE TWISTED PAIRS.
- ENSURE FRONT NUT IS PRESENT/INSTALLED ON THE CONNECTOR.
- COVER DRAIN WIRE WITH HEAT SHRINK (ITEM#18) FROM CABLE JACKET TO BACK OF CONNECTOR.
- CABLE ASSEMBLY WORKMANSHIP PER IPC/WHMA-A-620B CLASS 3.
- CABLE ASSEMBLY IS TO BE TERMINATED IN ACCORDANCE WITH THE WIRE TABLE.
- THE SUPPLIER SHALL SUPPLY A CERTIFICATE OF CONFORMANCE WITH EACH SHIPMENT THAT SHALL INCLUDE ABBOTT DWG NUMBER AND REVISION, ABBOTT PART NUMBER AND REVISION, SUPPLIER LOT NUMBER, QTY SHIPPED, DATE OF MANUFACTURE, AND A STATEMENT INDICATING ALL ASSEMBLIES AND COMPONENTS LISTED ON THE DWG PASS TEST REQUIREMENTS.
- PARTS SHALL BE CLEAN AND FREE OF DIRT, OIL, OTHER PROCESS CONTAMINANTS, FREE OF DAMAGE, AND SHALL BE PACKAGED TO ENSURE THAT DAMAGE DOES NOT OCCUR DURING SHIPPING.
- ALL MATERIALS TO BE REACH COMPLIANT TO EU DIRECTIVE (EC) 1907/2006, AND ROHS COMPLIANT TO 2011/65/EU AND 2015/863/EU.

RoHS Compliant

ITEM	PART NAME	QTY	PART NO.	DESCRIPTION
19	LABEL	1 PC	WOER P/N: HS2019081302	CABLE LABEL
18	HEAT SHRINK	AR	WOER P/N: CB0010PO03	TUBING, HEAT SHRINK, BLACK, ID 3/16"
17	HEAT SHRINK	AR	WOER P/N: CB0004P10002	TUBING, HEATSHRINK, BLACK, ID 3/16"
16	HEAT SHRINK	AR	WOER P/N: CB0006P10002	TUBING, HEAT SHRINK, BLACK, ID 1/4"
15	CABLE	60.96mm	PALCONN P/N: 5570130007	1C*28AWG+B BLACK OD:1.85±0.1MM
14	LABEL	2PCS	WOER P/N: HS2019081303	CABLE LABEL
13	GLUE	AR	LOCTITE P/N: EA E-00NS	GLUE LOCTITE P/N: EA E-00NS
12	TERMINAL	2PCS	MOLEX P/N: 08660109	CRIMP TERM, KK 254, 22-30 AWG, NICKEL, GOLD-PLATED.
11	HOUSING	1PC	MOLEX P/N: 22012027	CRIMP HOUSING, KK 254, 2 CIRCUITS.
10	CABLE	213.36mm	PALCONN P/N: 3109222009	22AWG*2C+TALCUM POWDER OD: 4.30±0.15mm
9	CONNECTOR	1PC	STARF P/N: SMA-4KW	CONN, SMA, JACK, R/A, RG178 COAX.
8	HOUSING	1PC	MOLEX P/N: 5055651401	MICRO-LOCK PLUS, RECEPTACLE, 14X1.
7	CABLE	60.96mm	STARF P/N: SMA-DW-1.5	(1P*26#+AL)*2C+(2C*26#+1C*28#+AL)*1C+(1P*28#+AL)*2C+AL+D+B OD: 5.8±0.3MM
6	CONNECTOR	1PC	STARF P/N: SMA-DW-1.5	CONN, SMA, PLUG, R/A, RG178 COAX.
5	CABLE	88.9mm	PALCONN P/N: 5570130006	1C*28AWG+B LIGHT BROWN OD: 1.85±0.1MM
4	TERMINAL	14PCS	MOLEX P/N: 5054311100	CRIMP: TERMINAL 26-30AWG, NICKEL, GOLD PLATED
3	HOUSING	1PC	MOLEX P/N: 5055650701	CONNECTOR: MICRO-LOCK PLUS, RECEPTACLE, 7x1
2	CABLE	248.9mm	PALCONN P/N: 5091280024	1P*28AWG+2C*28AWG+AL+D+B OD: 4.70±0.20mm
1	CONNECTOR	1PC	BR P/N: Z13C0C-P18LFG1-000WV	C SERIES, 18 PIN (16+2 COAX) PANEL MOUNT RECEPTACLE, WHITE DOT

GENERAL TOLERANCE	ANGLE TOLERANCE	NAME (INTENDED USE)	CUSTOMER DRAWING
X. ±1.00 .X ±0.50 .XX ±0.20 .XXX ±0.15			
MAJOR (QC CHECKED) ▼ = 1 places		APPROVED: LGZ	DATE: 2020/09/04
	UNIT mm	CHECKED:	DATE:
SHEET 1 OF 3		DESIGN: LGH	DATE: 2020/09/04

PALCONN

TITLE: C SERIES 18 PIN (16 + 2COAX) PANEL MOUNT RECEPTACLE TO 2x SMA R/A CONNECTORS (PLUG & JACK) & 3x MOLEX CONNECTORS (PIN: 2X1, 7X1, & 14X1) CABLE ASSEMBLY

SERIES: SIZE: A4
DRAWING NO: 70 H001 ABBO R018BIX REV. 12