

1 2 3 4 5 6 7 8

A

B

C

D

E

F

A

B

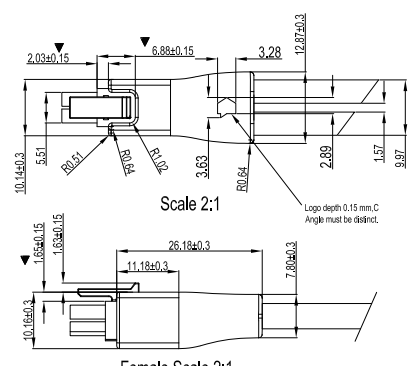
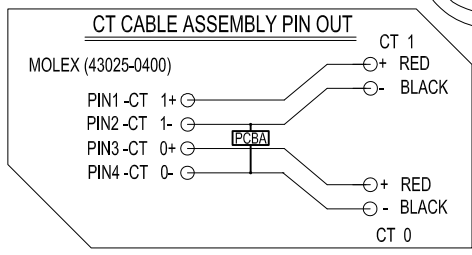
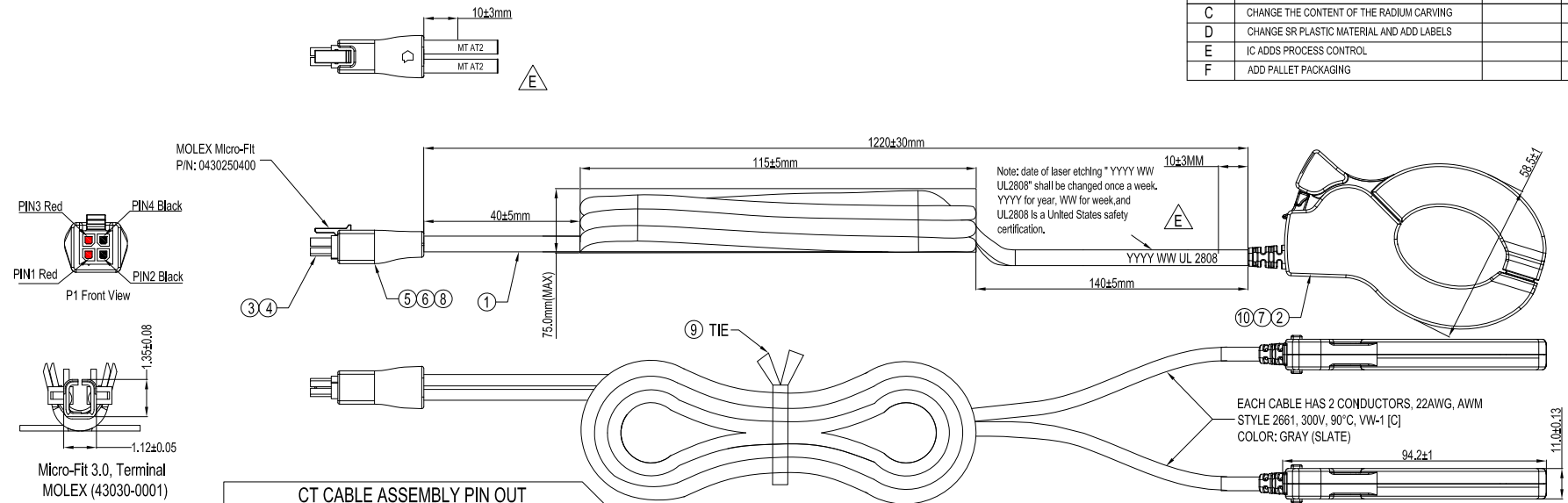
C

D

E

F

REV	DESCRIPTION	ECN. NO.	APPROVED/DATE
A	NEW RELEASE		GSJ 2021/03/15
B	ADD UL STANDARD AND REPLACE HOUSING MATERIAL		GSJ 2021/04/08
C	CHANGE THE CONTENT OF THE RADIUM CARVING		GSJ 2021/09/06
D	CHANGE SR PLASTIC MATERIAL AND ADD LABELS		GSJ 2021/09/17
E	IC ADDS PROCESS CONTROL		GSJ 2022/12/05
F	ADD PALLET PACKAGING		GSJ 2024/08/06



- NOTES:**
- Dimensions And Tolerances Apply After Finishing.
  - All Edges Shall Be Free Of Burrs Or Rough Edges.
  - Operating Temperature: -40°C To +90°C
  - Storage Temperature: -45°C To +90°C
  - Wire Pull Test: 35.6N (8.0 lbf)
  - Mating/Umating Force Test: 35.6 N (8.0 lbf)  
Maximum Insertion Force: 8.0 N (1.8 lbf)  
Minimum Withdrawal Force: 3.7 N (0.8 lbf)
  - Current Ratio: 150A/333mV (Burden Inside The CT)
  - Dielectric Withstanding Voltage (Hi-pot): 4KV/1mA/1min.
  - Impluse Withstand Voltage: 5KV Peak.
  - Insulation Resistance: DC500V/100MQ min.
  - Meet UL 2808 Standard

ITEM	PART NAME	QTY	PART NO:	DESCRIPTION
10	RTV	AR		RTV KAFTER K-5915W
9	TIE	1pc		L:130mm, Color: White, Material: TBD
8	PCBA	1pc		CT ID (EEPROM: Microchip AT21CS01-STUM10)
7	SR	AR		PVC 86A White UL94V-HB Pantone PQ-11-0602TCX N16P
6	INNER MOLD	AR		LDPE
5	OUTER MOLD	AR		TPE, UL94-V0 Rating, Color: PQ COOL GRAY 8C
4	TERMINAL	4pcs		Micro-Fit 3.0™ Crimp, Terminal, Female, With Tin (Sn) Plated Phosphor Bronze Contact, 20-24 AWG,
3	CONNECTOR	1pc		Micro-Fit 3.0™ Receptacle Housing, Dual Row, 4 Circuits, Halogen Free,
2	CT CLAMPS	2pcs		Current Transformer UL94-V0 Material: PC LG LUPLOY EF-1006F Color: White Pantone PQ-11-0602TCX (EDM Cores)
1	CABLE	2pcs		22AWG (17/0.16TC)*2C+JACKET PVC GRAY 8C OD: 4.2±0.2MM Copartner# 63A00222, E119932-Y, AWM STYLE 2661 90°C 300V VW-1

GENERAL TOLERANCE	ANGLE TOLERANCE	NAME(CUSTOMER USE)	CUSTOMER DRAWING	
.X ±0.5			CUSTOMER P/N:	
.XX ±0.25			NCTE-ASSY-09.03	
MAJOR(QC CHECKED)		APPROVED:	DATE	TITLE:
▼ = places		LGZ	2024/08/06	CABLE ASSEMBLY, ELLIPSE CT, ID
	UNIT mm	CHECKED:	DATE	SERIES:
				SIZE: A4
SHEET 1 OF 8		DESIGN:	DATE	DRAWING NO: HSG-WI-001-080
		GSJ	2024/08/06	REV. F

**RoHS Compliant**

1 2 3 4 5 6 7 8