

Approved Cable Suppliers				
Item #	Supplier name	Part Number	UL #	Raw cable jacket mark
1	PALCONN	4A90622001		NO MARK
2	PALCONN	3B00118018		NO MARK
3	PALCONN	3B00118019		NO MARK
4	PALCONN	3B00118020		NO MARK
5	PALCONN	3B00118021		NO MARK
6	PALCONN	3B00118022		NO MARK

REVISION	INITIALS	REASON	DATE	F	LGH	BOM QTY, LABEL TABLE P1	7/19/19
A	LGH	INITIAL RELEASE	8/20/18	G	LGH	SENSOR P/N, NEW P1 CONNECTOR & OVERMOLD	11/12/19
B	LGH	ADD LABEL, UPDATE WIRE TABLE	12/4/18	H	LGH	ITEM #7 WIRE COLOR	12/11/19
C	LGH	DETAIL A	4/24/19	I	LGH	CUSTOMER PART NUMBER	12/19/19
D	LGH	CONNECTOR COLOR/STRAIN RELIEF	5/14/19	J	LGH	ITEM#20 POTTING & NOTES	03/23/20
E	LGH	PCB/EEPROM NOTES, DETAIL A	7/8/19	K	LGH	P1 CONNECTOR P/N CHANGEKEYWAY CHANGE B TO A	04/20/20
D	LGH	CONNECTOR COLOR/STRAIN RELIEF	5/14/19	L	LGH	UPDATE DETAIL A	04/27/20
				M	LGH	UPDATE BOM ITEM#20-22	09/18/20

A

B

C

D

E

F

A

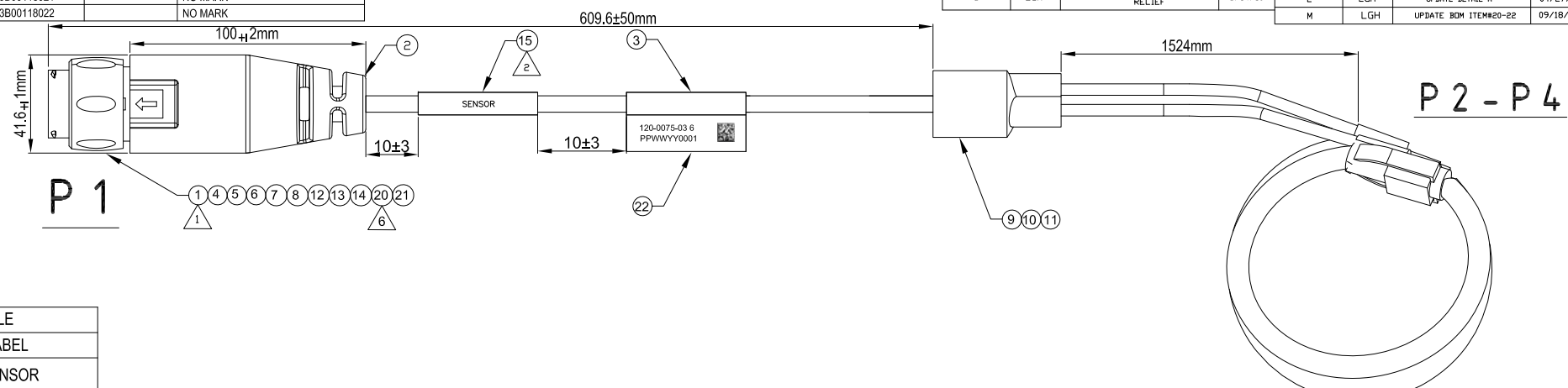
B

C

D

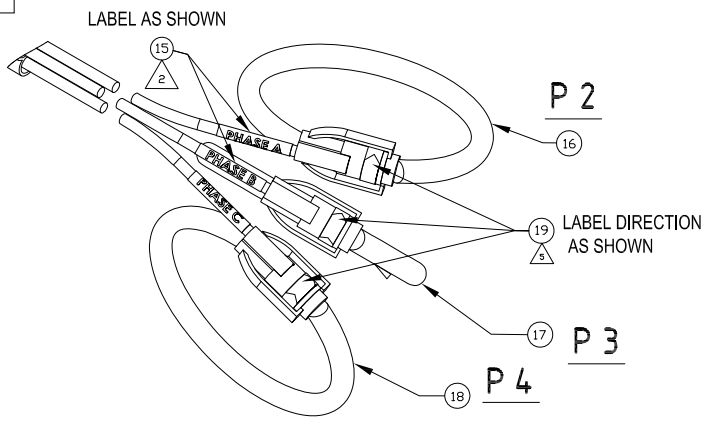
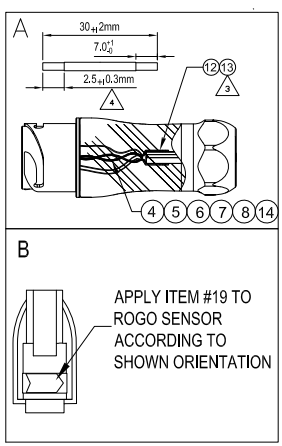
E

F



SOLDER CUP VIEW

LABEL TABLE	
CONN	LABEL
P1	SENSOR
P1	P/N 120-0075-03 6 PPWWYY0001
P2	PHASE A
P3	PHASE B
P4	PHASE C



22	LABEL	1PC	L:75.0MM*W:30.0M PE MATERIAL WHITE BACKGROUND AND BLACK WORDS. YU HONG JIN P/N: HFBQ00095
21	GLUE	AR	LOCTITE P/N: EA E-30CL-EN
20	GLUE	AR	KAFUTER P/N: K-5096L
19	LABEL	3PCS	STICKER, LOAD ARROW, ZM1
18	SENSOR	1PC	SENSOR ROGO, UM1, BLUE (P4)
17	SENSOR	1PC	SENSOR ROGO, UM1, WHITE (P3)
16	SENSOR	1PC	SENSOR ROGO, UM1, RED (P2)
15	SHRINK TUBE	AR	TUBING, HEAT SHRINK, PRINTABLE, 19mm BLACK/WHITE
14	SHRINK TUBE	AR	HEAT-SHRINK TUBING, ID 2.3mm BEFORE SHRINKING 25FT
13	SHRINK TUBE	AR	TUBING, SHRINK, .48" x 2.5" LG
12	PCBA	1PC	PCBA, EEPROM BOARD, CABLE ID
11	CRIMPING TERMINAL	6PCS	BUTT SPLICE, SOLDER SLEEVE, 22-24 AWG
10	CABLE SEPARATOR	1PC	CABLE SPLITTER, HEAT SHRINK
9	SHRINK TUBE	AR	19MM SHRINK TUBE, ADHESIVE LINED
8	CABLE	1PC	BLUE 18AWG 1C*18AWG L: 30±2MM
7	CABLE	1PC	BROWN 18AWG 1C*18AWG L: 30±2MM
6	CABLE	1PC	YELLOW 18AWG 1C*18AWG L: 30±2MM
5	CABLE	1PC	GREEN 18AWG 1C*18AWG L: 30±2MM
4	CABLE	1PC	RED 18AWG 1C*18AWG L: 30±2MM
3	CABLE	AR	3P*22AWG+F+AL+D+B OD: 6.8±0.2MM XL-PE(MOISTURE CURED) BLACK
2	OVERMOLD	AR	MATERIAL: TPE BLACK 88A
1	CONNECTOR	1PC	BIX P/N: FS4MBL.A23M00.1500 (RECEPTACLE)

ITEM		PART NAME	QTY	PART NO	
GENERAL TOLERANCE		ANGLE TOLERANCE		NAME (INTENDED USE)	
X.	+1.00	X _o	+3.0,	MOLDING DRAWING	
.X	+0.50	.X _o	+1.0,	CUSTOMER P/N:	
.XX	+0.20	.XX _o	+0.5,	120-0075-03	
.XXX	+0.15				
MAJOR (QC CHECKED)		SCALE 1:1		APPROVED: DATE	
▼ = 8 places				LGZ 2020/09/18	
CRITICAL ∇ =		UNIT mm		CHECKED: DATE	
SHEET 1 OF 2		DESIGN: DATE		TITLE:	
		LGH 2020/09/18		CABLE ASSY UM3+ KRAKEN	
				SERIES:	
				DRAWING NO: MED-MD-001-035	
				SIZE A4	
				REV M	