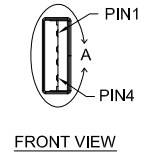
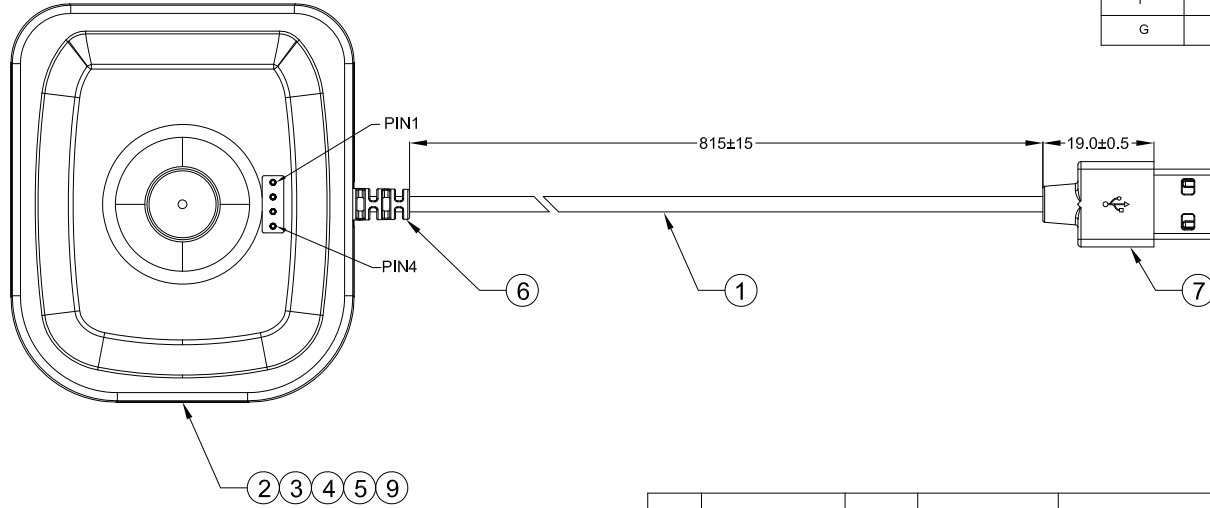


REVISION	INITIALS	REASON	DATE
A	LGH	NEW RELEASE	2022/09/19
B	LGH	UPDATE DRAWING	2023/03/27
C	LGH	ADDITIONAL PACKING SPECIFICATION	2023/04/25
D	LGH	CHANGE THE TOTAL CABLE LENGTH	2023/07/05
E	LGH	ADD POINT P2 BRAIDED GROUNDING. MODIFY PACKING	2023/10/21
F	LGH	ADD THE SN CODING PRINCIPLE	2024/09/21
G	LGH	ADDED ANTI-VU REQUIREMENTS	2024/10/29

**P1**



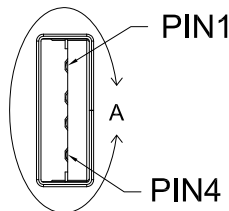
**P2**

**PIN ASSIGNMENT**

P1	COLOR	P2
PIN4	RED	PIN1
PIN2	WHITE	PIN2
PIN3	GREEN	PIN3
PIN1	BLACK	PIN4
-	DRAIN+SHIELD	SHELL


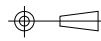
**ELECTRICAL PROPERTIES:**  
1. 100% OPEN, SHORT & MIS-WIRE TEST

**NOTES:**  
1. SOLDER WITH Sn96.5/Ag03/Cu.5 SOLDER (LEAD FREE).



DETAIL A  
SCALE 2 : 1

ITEM	PART NAME	Q'TY	PART NO:	DESCRIPTION
10	OUTER MOLDING	TBD		MATERIAL: TPU (PANTONE 11-0602TCX)
9	SCREW	4 PCS		SCREW M1.5*5.0MM
8	CONNECTOR	1 PC		NO MARKING22AWG*2C+TALCUM POWDER BLACK COLD RESISTANT BRASS. INSULATION PBT/LCP BLACK, SHELL NICKEL PLATED 1u".
7	INTERNAL MODEL	AR		INNER MOLD MATERIAL: LD-PE TRANSPARENT
6	OUTER MOLDING	AR		MATERIAL: TPU (PANTONE 11-0602TCX)
5	NEODYMIUM MAGNET	3 PCS		NEODYMIUM MAGNET: Ø6.0*L3.6 N52
4	PCBA	1 PC		PCBA
3	ENCLOSURE BACK SHELL	1 PC		MATERIAL: PA-757 ABS ALPINE WHITE (PANTONE 11-0602TCX)
2	ENCLOSURE FRONT SHELL	1 PC		MATERIAL: PA-757 ABS ALPINE WHITE (PANTONE 11-0602TCX)
1	CABLE	815MM		4C*28AWG+AL+B TPU ALPINE WHITE (PANTONE 11-0602TCX) OD: 3.50±0.20mm (UV RESISTANCE)

GENERAL TOLERANCE		ANGLE TOLERANCE		NAME(INTENDED USE)	
X.	±1.00			CUSTOMER P/N:	
.X	±0.50				
.XX	±0.20				
.XXX	±0.15				
MAJOR(QC CHECKED)				APPROVED:	DATE
▼ = 0 places				LGZ	2024/10/29
		UNIT mm		CHECKED:	DATE
				LJJ	2024/10/29
SHEET 1 OF 2				DESIGN:	DATE
				LGH	2024/10/29

**RoHS Compliant**

TITLE: RSW CHARGING

SERIES: SIZE: A4

DRAWING NO: MED-MD-001-096 REV G